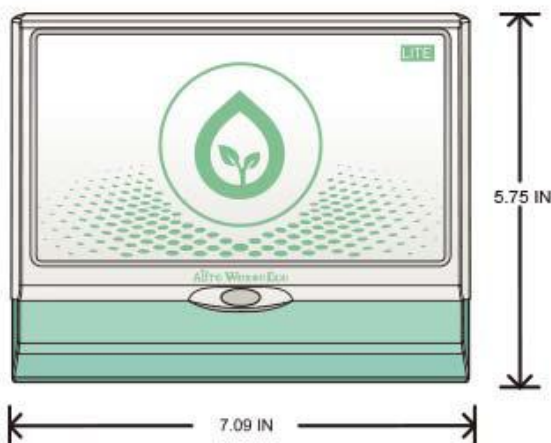


- AC 24V: Terminals for connecting the 24VAC power adapter.
- COM: Public terminal for connecting common wires from all zones.
- MST: Terminal for connecting the power wire from the Master Zone.
- Z1: Terminal for connecting the power wire from Zone 1.
- Z2: Terminal for connecting the power wire from Zone 2.
- Z3: Terminal for connecting the power wire from Zone 3.
- Z4: Terminal for connecting the power wire from Zone 4.
- Z5: Terminal for connecting the power wire from Zone 5.
- Z6: Terminal for connecting the power wire from Zone 6.
- Z7: Terminal for connecting the power wire from Zone 7.
- Z8: Terminal for connecting the power wire from Zone 8.
- COM: Public terminal for connecting common wires from all zones.
- Z9: Terminal for connecting the power wire from Zone 9.
- Z10: Terminal for connecting the power wire from Zone 10.
- Z11: Terminal for connecting the power wire from Zone 11.
- Z12: Terminal for connecting the power wire from Zone 12.
- Z13: Terminal for connecting the power wire from Zone 13.
- Z14: Terminal for connecting the power wire from Zone 14.
- Z15: Terminal for connecting the power wire from Zone 15.
- Z16: Terminal for connecting the power wire from Zone 16.
- NC: Not used.
- R1: Terminal for connecting wire from the Rain Sensor.
- R2: Terminal for connecting wire from the Rain Sensor.
- T1: Terminal for connecting the red wire from the Temperature Sensor.
- T2: Terminal for connecting the yellow wire from the Temperature Sensor.
- T3: Terminal for connecting the black wire from the Temperature Sensor.
- S1: Public terminal for connecting the 485 communication wire (Reserved).
- S2: A terminal for connecting the 485 communication wire (Reserved).
- S3: B terminal for connecting the 485 communication wire (Reserved).

• Install Aifro WaterEco Lite

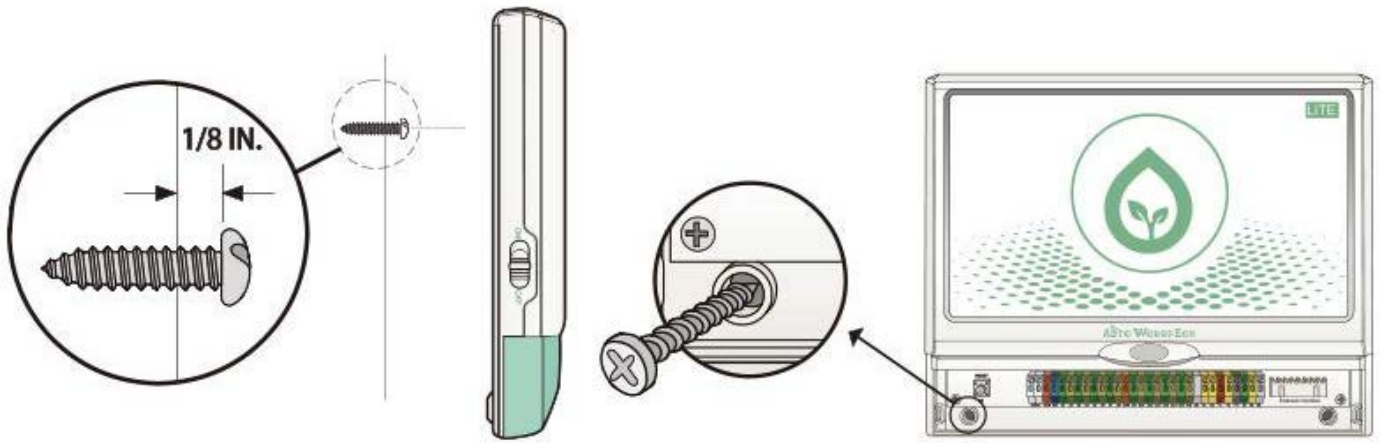


OR



MOUNT AIFRO WATERECO IN PROXIMITY TO ELECTRICAL POWER SOURCE AS REQUIRED

! NOTE: The operating temperature range is 14°F to 149°F (-10°C to +65°C).



1. Remove the green cover on Aifro WaterEco Lite. Measure the position, planish with the hammer and fix the attached screw with the cross-shaped screwdriver.
2. Align the back of Aifro WaterEco Lite on the screw and hang it on the wall, record the hold location on the lower-left and lower-right corner with the pencil.
3. Hang Aifro WaterEco Lite again, fix the screws into the lower-left and lower-right corner with the cross-shaped screwdriver.

NOTE: Please make sure Aifro WaterEco Lite is not exposed to rain and direct sunlight.

Tips: Aifro WaterEco Lite is designed for indoor use only. For outdoor use, please purchase Aifro WaterEco Waterproof Enclosure separately. Besides, if you want to expand zones (12 zones, 24 zones and 36 zones), please purchase our custom-made expansion board bundled with Aifro WaterEco Waterproof Enclosure optionally. [Learn More](#)

- [Download Aifro App](#)

Please download Aifro App from <https://www.aifro.com/download.html> or scan the following two QR codes to download.




For iOS

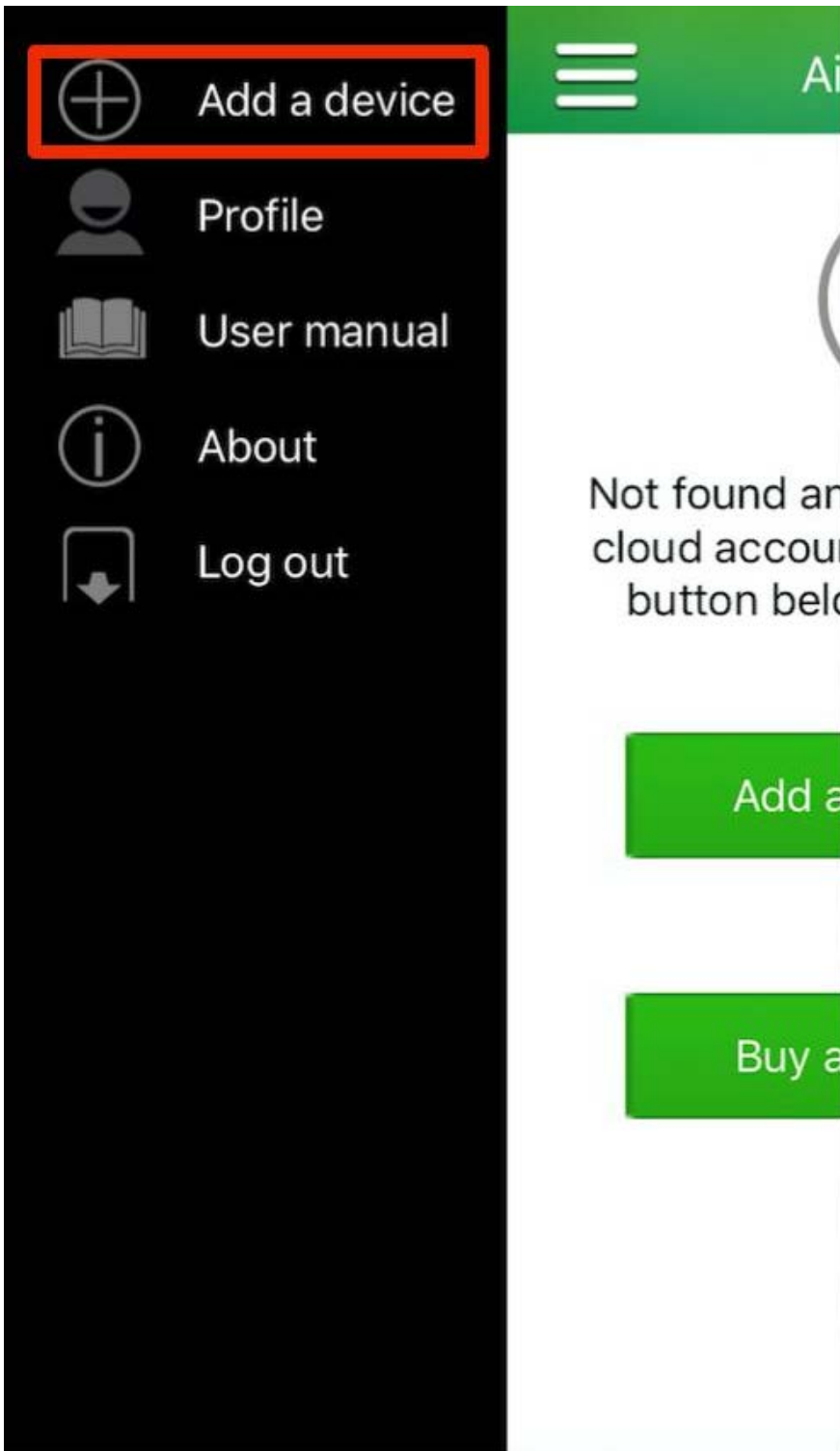


For Android

If you use for the first time

- [Set up Wi-Fi connection](#)

Run Aifro App. Register an Aifro account and login to Aifro Cloud. Tap  and select "Add a device" in the drop-down options or tap the "Add an Aifro device" button in the main interface.



Tap the "Add a new device" button and then "Aifro WaterEco Lite" in the next interface. Then you'll see the following interface:



Add an Aifro device

Add Aifro WaterEco Lite device.

Please input the SSID and password of your Wi-Fi router, press and hold the device's LED button for a few seconds. When the LED light starts blinking and a beep is heard, please quickly tap the 'Start Configuring' button.

Start Configuring

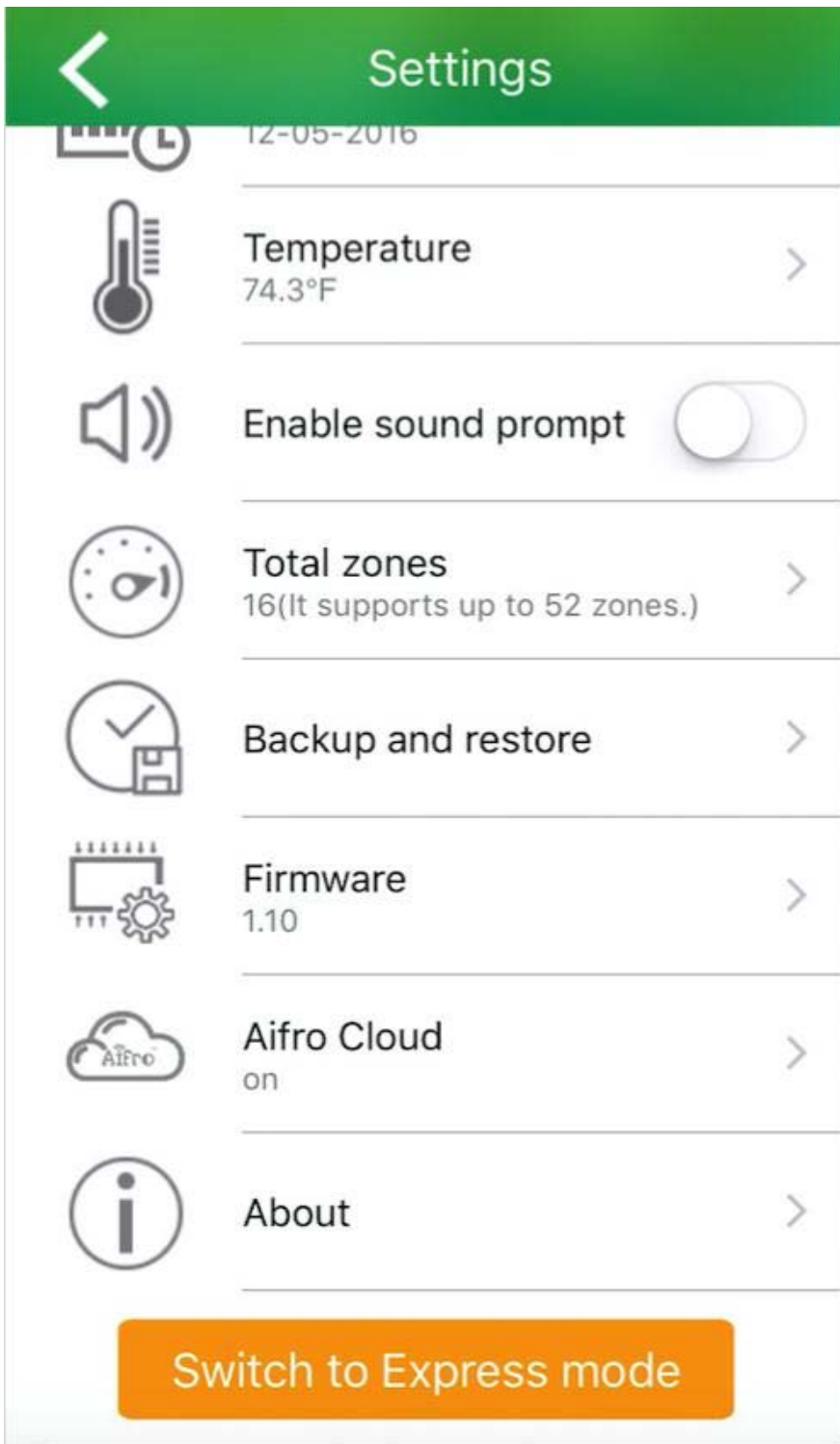
What is the meaning of the LED light?

How to configure Wi-Fi connection in AP mode

Input the SSID and password of your Wi-Fi router, press and hold the Wi-Fi configuration button on Aifro WaterEco Lite until a beep is heard. Then quickly tap the "Start Configuring" button on the mobile app. If the configuration is successful, please tap "OK" and return to the device list interface. Otherwise please try these steps again.

- **Setup Wizard**

When you use Aifro WaterEco Lite for the first time, you'll see the "Start setup wizard" interface.



In the "Settings" interface, you can change the device name and password, etc. If you have any problem, please contact our support team by support@aifro.com

- [Contact Us](#)

• If you encounter any problem when using our products, please contact us by support@aifro.com or call 1-844-MY-AIFRO (toll free) and we will serve you with utmost satisfaction.

• We'll offer a satisfying discount on batch purchase and affiliate program. If you are interested, please contact us by sales@aifro.com

COMPANY

[Our Team](#)
[Press Room](#)
[Affiliate](#)

PRODUCTS

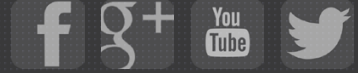
[Aifro WaterEco](#)
[Aifro WaterEco Lite](#)
[Aifro WaterEco Waterproof Enclosure](#)
[AiCan Plug](#)

SUPPORT

[Download](#)
[Video Guide](#)
[Knowledge Base](#)
[Contact Support](#)

DEVELOPMENT

[API Reference](#)



[Contact us](#) | [Privacy Policy](#) | [Warranty](#) | [Terms and Conditions](#)

Copyright © 2017 Aifro™ Inc. All rights reserved